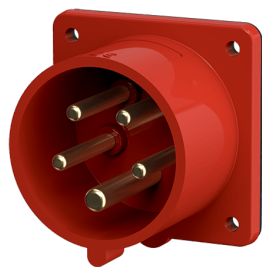


Panel mounted inlet
Part no. 1408

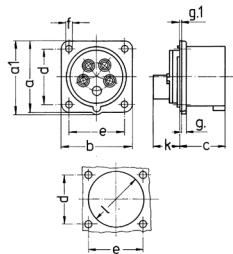


- screw terminals
- a retaining nose to hold the hinged lid of the connector must be provided by the customer in order to ensure satisfactory locking

Technical specifications

Ampere	16 A
Poles	5 p
Voltage	400 V
Clock position	6 h
Hertz	50-60 Hz
Connection technology	Screw terminals
Contact	standard
Protection type	IP44
Weight	117 g
Certifications	VDE (ÜG)

Drawing



Drawing	Amp.	16	32
2 MB 68	Poles	5	5
Dim. in mm	a	66	72
	a1	69	78
	b	66	72
	c	43	52
	d	52	60
	e	52	60
	f	4.5	4.5
	g	4.5	4.5
	g1	2	2
	k	27	32
	l	59	63
Terminal for cond. cross		1	2.5
section (mm ²) min.-max.		—2.5	—6